

star style

what they're wearing...

about face go with the glow



JILL JOHNSON/JPI

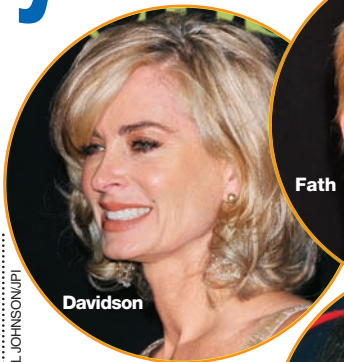
■ *Daytime Emmy-winning makeup artist Jim DeMarco talks make-up trends of the Emmys.*

Viva Las Vegas! For the first time

ever, this year's Daytime Emmys debuted in Sin City and did not disappoint.

From rhinestones to sequins, everyone radiated like Emmy gold, but nothing shone more than their faces. If you thought the matte look was in, think again. Stars twinkled like Vegas showgirls with dewy complexions and shimmery eyes. Maura West (Carly, ATWT), Bree Williamson (Jessica, OLTL) and Eileen Davidson (Ashley, Y&R) were among the many whose mega-wattage skin lit up the room. The iridescent skin tones were juxtaposed with equally show-stopping eyes. Shimmer, frost and glitter — usually left to the young or avoided

26



Davidson

JILL JOHNSON/JPI



Fath

HOWARD WISE/JPI



Lucci

HOWARD WISE/JPI

at all costs — took center stage. Farah Fath (Gigi, OLTL), Nadia Bjorlin (Chloe, DAYS), Kate Linder (Esther, Y&R) and Beth Chamberlin (ex-Beth, GL) twinkled with lids of steel in varying shades of metallic. Even daytime diva Susan Lucci (Erica, AMC) opted for darker, smoky eyes and highlighted cheekbones instead of her classic black liner and red lips. This year's

awards proved that women of any age can amp up their look with a pop of glitter and shine at the right time and place. Take the risk and go with the glow!

try this at home

If you want to glow like Emmy gold, try a light-reflecting moisturizer like M.A.C Strobe Cream [\$29.50 at Nordstrom] as a base. For more defined cheekbones, Benefit High Beam [\$24 at Sephora.com] or NARS The Multiple stick in Copacabana [\$38 at Sephora.com] are great choices. Finish with a sheer (not matte) dusting of blush and bronzer. To get those diamond-encrusted lids, try a cream shadow with loose shimmery or glittery pigment. For the budget conscious, L'Oréal Paris HiP makeup has a great variety of loose shine "Shocking" shadows [\$12 at drug store.com] and powder highlighters.